

RO增压泵 – B系列 RO booster pump – B series



广东展申合力电器有限公司
Guangdong Zhanshen Heli Electrical Appliances Co., Ltd.



特性/SPECIFICATIONS

- ★ 高效、节能、低噪音、长寿命无刷电机。
Brushless Motor-High efficiency , low power consumption , low noise , long life.
- ★ 能自动排出管道内空气、真空吸水、自吸能力强、压力稳定、不漏水、冬天不失压。
Strong selfpriming , stable outlet pressure , no leakage , no decompression in winter
- ★ 过电流保护,智能调速稳压,电源反接保护。
Over current Protection intelligent pressure speed adjustment.Anti-access protection

运用/APPLICATIONS

- ★ 适用于水管网压力在30PSI的净水机等产品及机械行业等。
Suitable for home water purifier with inlet pressure of 30 psi, for other use, please contact us

本系列产品通过 RoHS / CE / ISO9001国家涉水卫生认证

All products pass RoHS / CE / ISO 9001 and National water safety prove

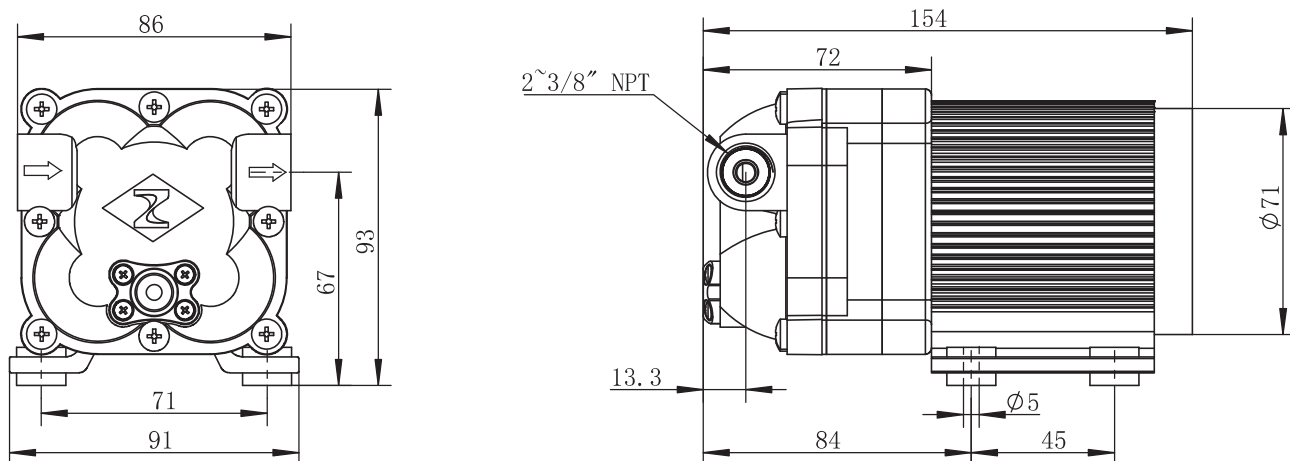
型号 MODEL	规格/DIM."A"x"B"x"C" Size (mm)	电压 (V) VOLTAGE (V)	工作电流 (A) CURRENT (A)	工作流量 (L/MIN) FLOW (L/MIN)	进水压力 PSI INLET PRESSURE (PSI)	口径 (") Port (")	重量 (KG) WEIGHT (KG)
ZS-DRO-B200G	154X91X93	DC 24	≤ 1.6	≥ 1.6	30	3/8	1.3
ZS-DRO-B300G	154X91X93	DC 24	≤ 2.0	≥ 2.0	30	3/8	1.3
ZS-DRO-B400G	154X91X93	DC 24	≤ 2.2	≥ 2.6	30	3/8	1.3
ZS-DRO-B500G	154X91X93	DC 24	≤ 2.5	≥ 3.2	30	3/8	1.3
ZS-DRO-B600G	154X91X93	DC 24	≤ 3.0	≥ 3.8	30	3/8	1.3
ZS-ARO-B200G	154X91X93	DC 24	≤ 2.4	≥ 1.4	0	3/8	1.3
ZS-ARO-B400G	154X91X93	DC 24	≤ 2.9	≥ 2.5	0	3/8	1.3

地址: 惠州市惠州大道汤泉199号侨兴工业园4号楼2楼
Add: 2nd floor, 4th building, Qiaoxing Industrial Park, Tangquan 199,
Huizhou Avenue, Huizhou, China

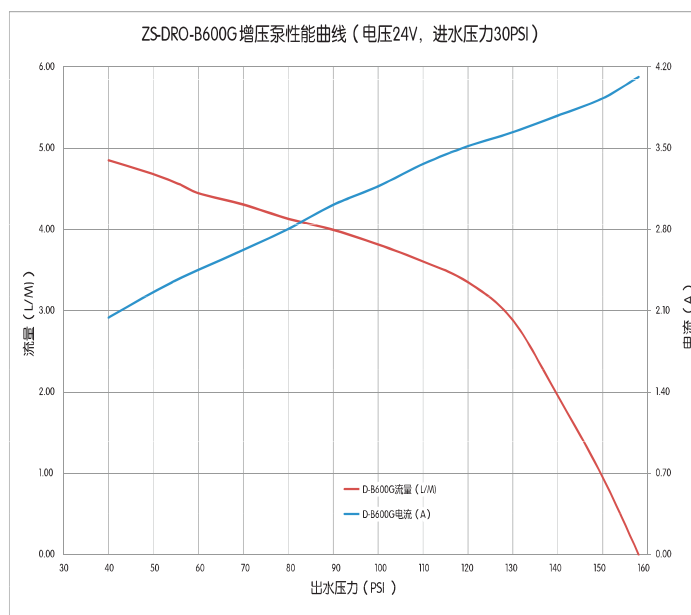
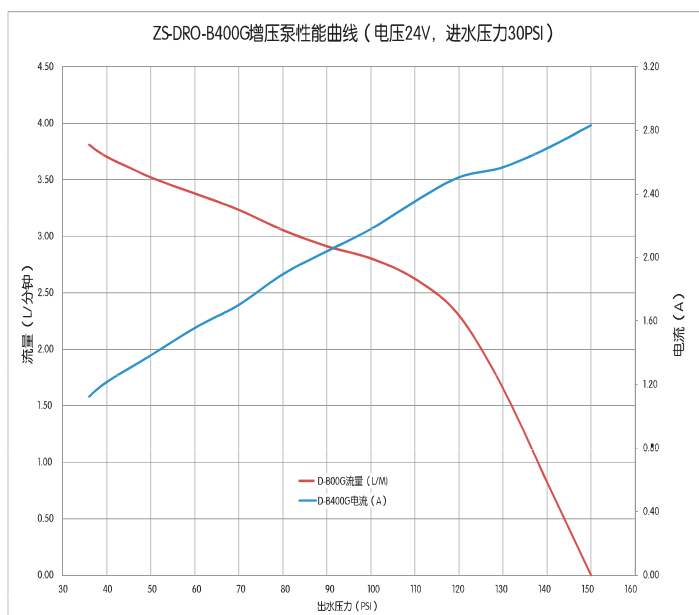
电话/Tel: +86-752-2225957 / 2225927 传真/Fax: +86-752-6637864
网址: //www.szzhanshen.com szzhanshen.en.alibaba.com
邮箱/E-mail: sales@szzhanshen.com 邮编/PC: 516023

B系列水泵外形图和性能曲线 Outline Drawing & Performance Curves–B series

外形图 (Outline drawing)



性能曲线 (Performance curves)



地址: 惠州市惠州大道汤泉199号侨兴工业园4号楼2楼
Add: 2nd floor, 4th building, Qiaoxing Industrial Park, Tangquan 199,
Huizhou Avenue, Huizhou, China

电话/Tel: +86-752-2225957 / 2225927 传真/Fax: +86-752-6637864
网址: //www.szzhanshen.com szzhanshen.en.alibaba.com
邮箱/E-mail: sales@szzhanshen.com 邮编/PC: 516023